

Rybářství

Ekologie vodního prostředí



Michal Šorf

michal.sorf@mendelu.cz

Vodní bezobratlí živočichové představují většinu diverzity živočichů ve vodním prostředí.

Zooplankton

Hmyz

Měkkýši

Ostatní korýši



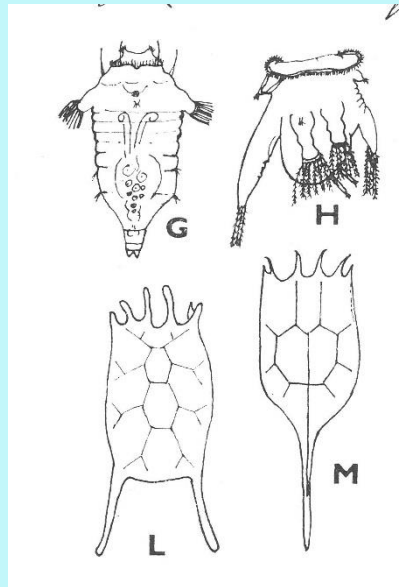
ZOOPLANKTON

Většina zooplanktonu patří mezi:

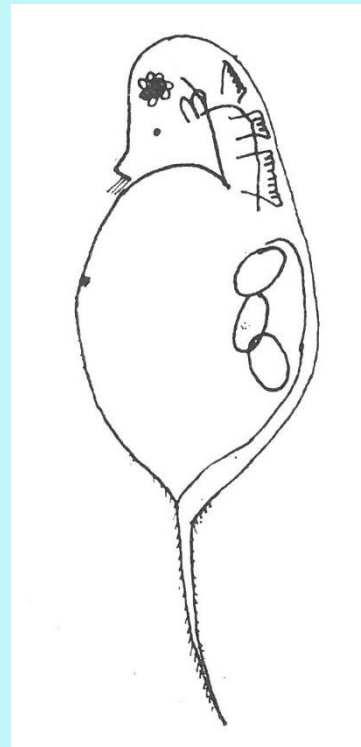
Protista



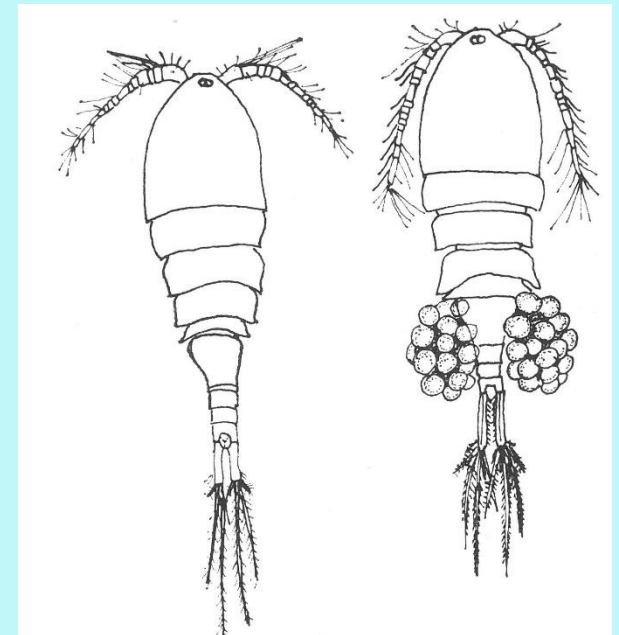
vířníci
Rotifera



perloočky
Cladocera

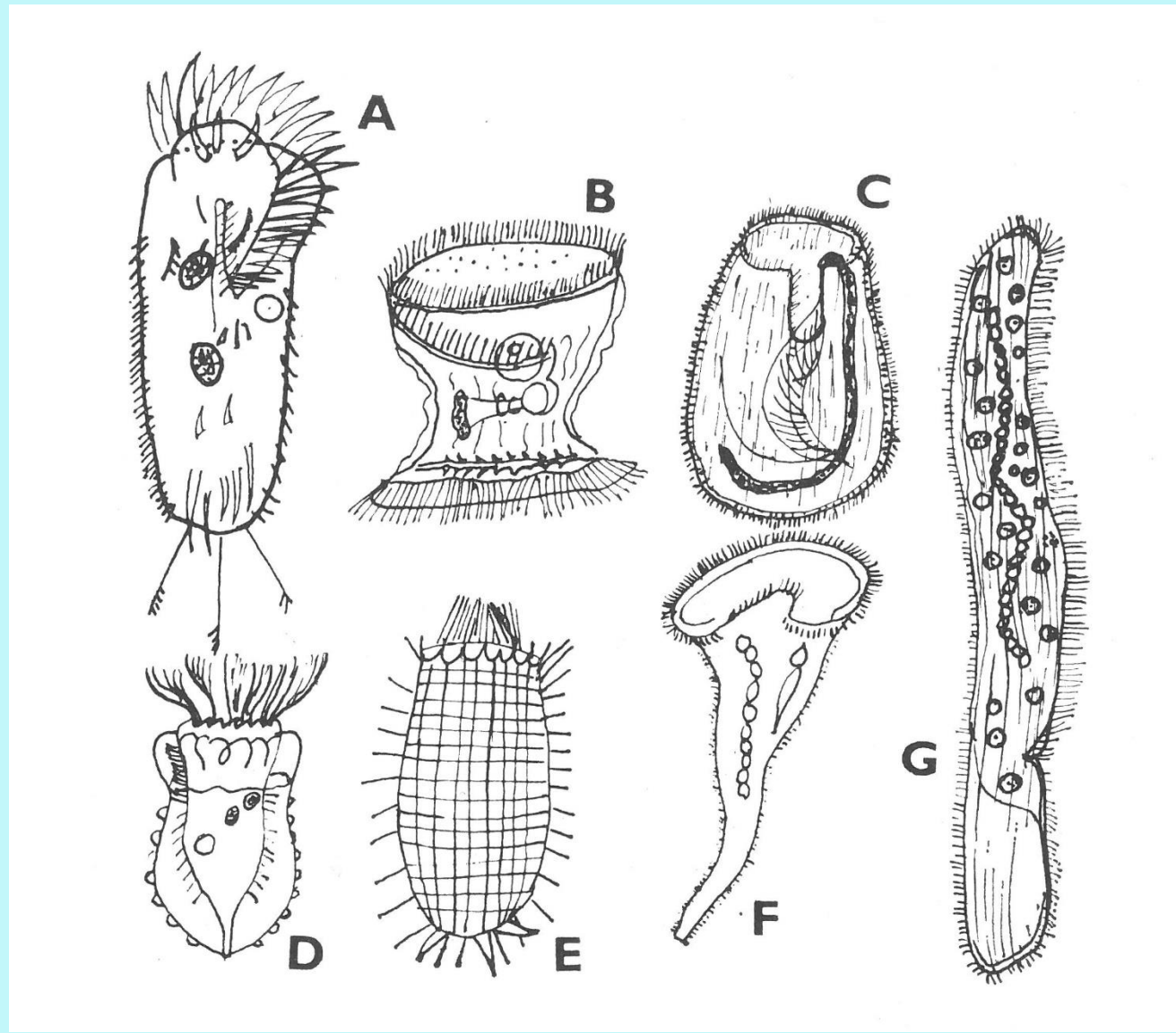


klanonožci
Copepoda

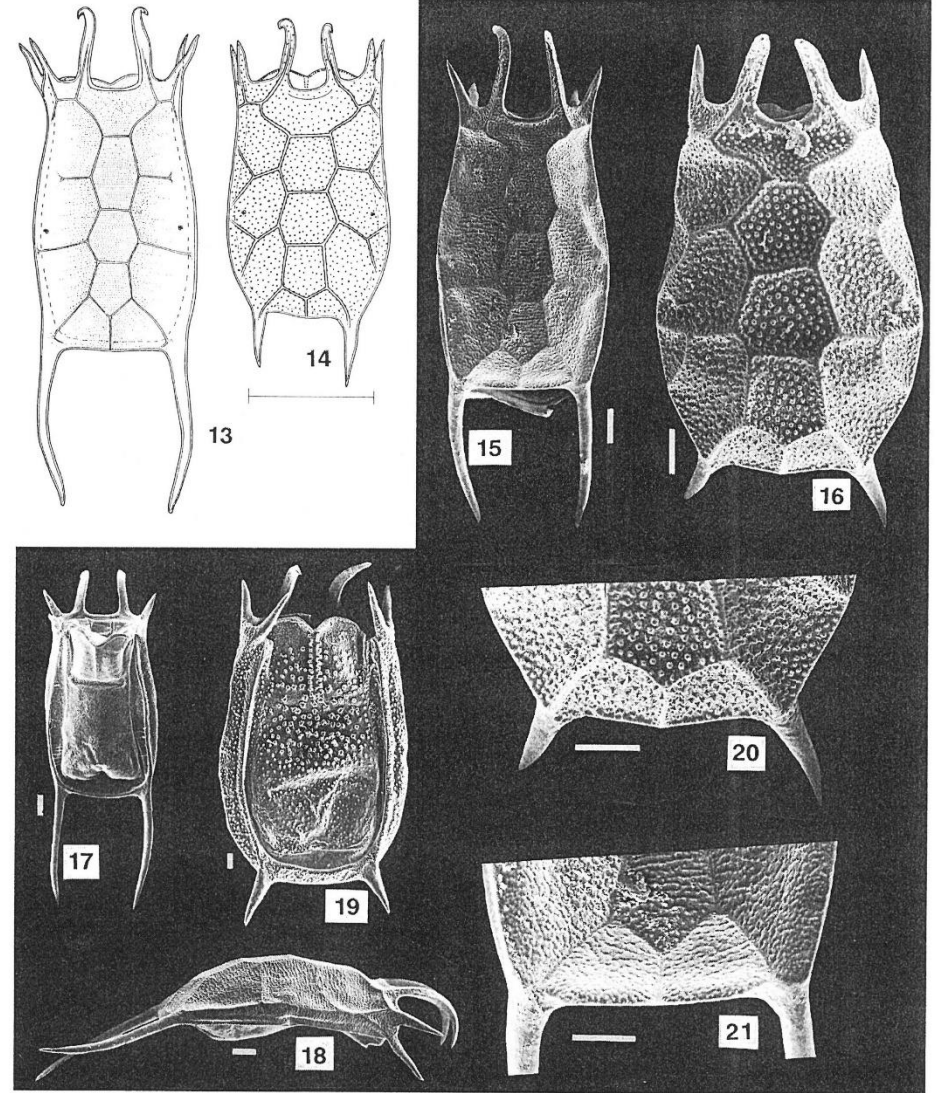
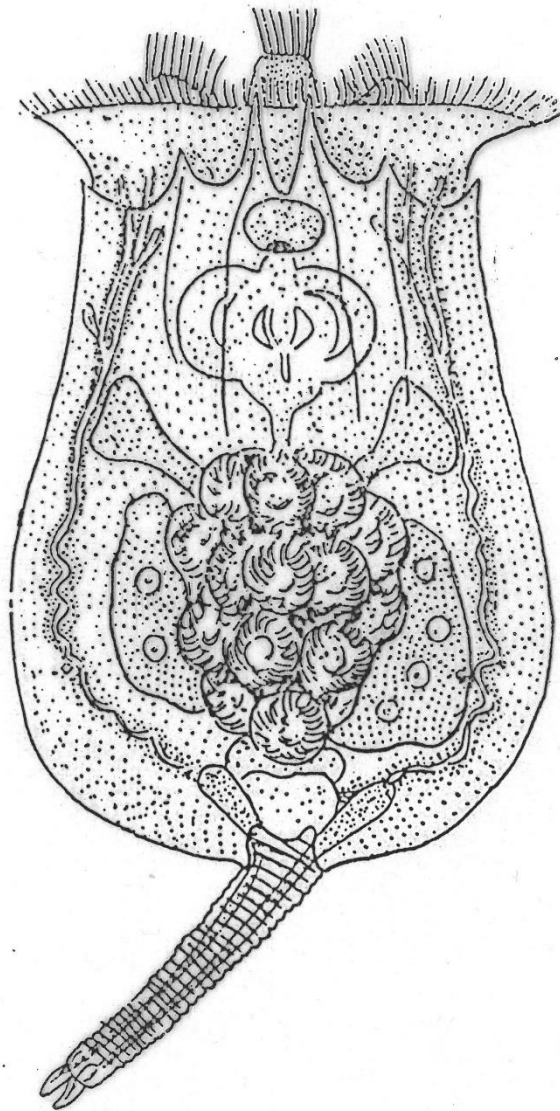


PROTISTA

- jednobuněční „živočichové“
- bičíkovci
- nálevníci

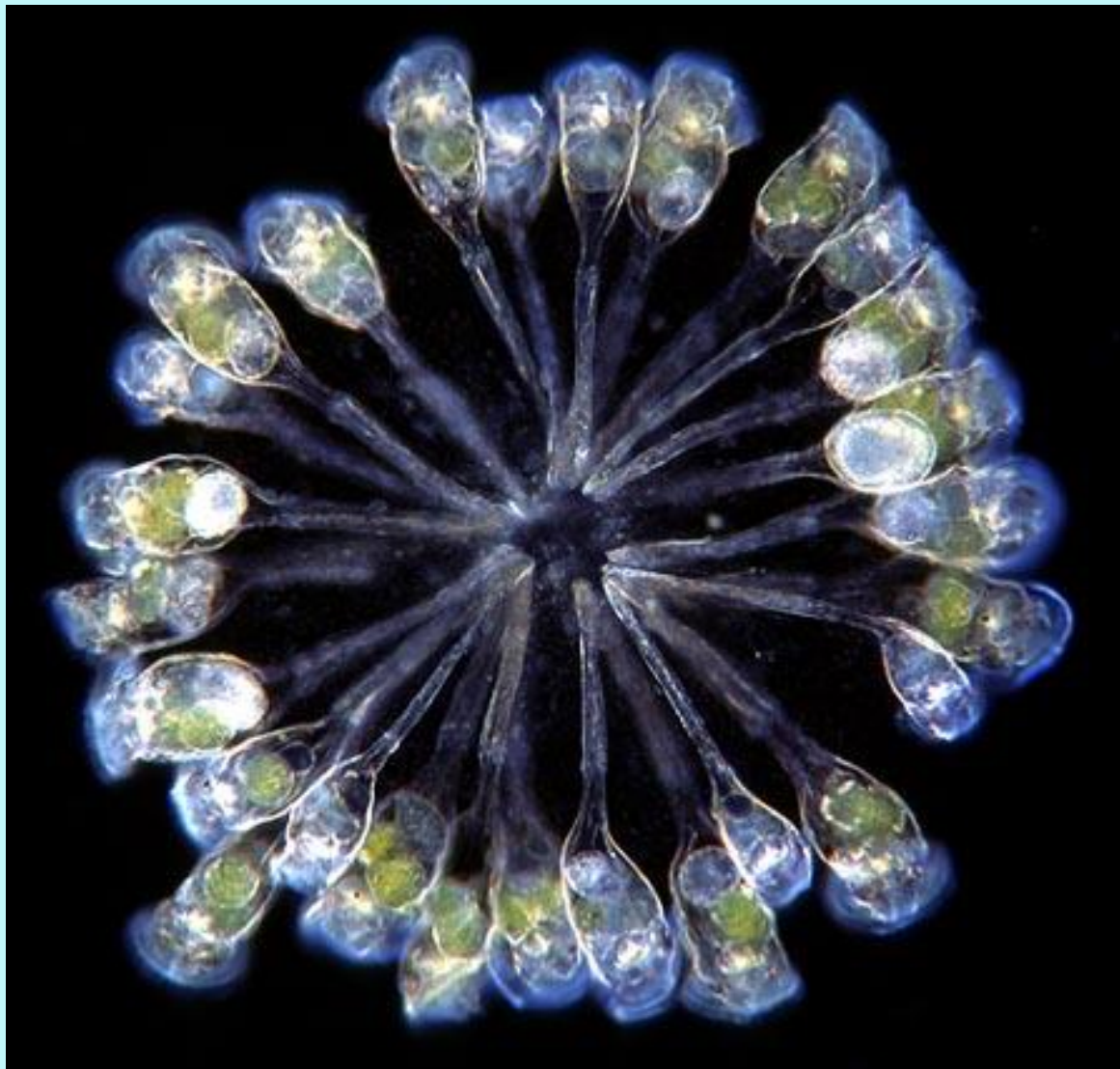


ROTIFERA - VÍŘNÍCI

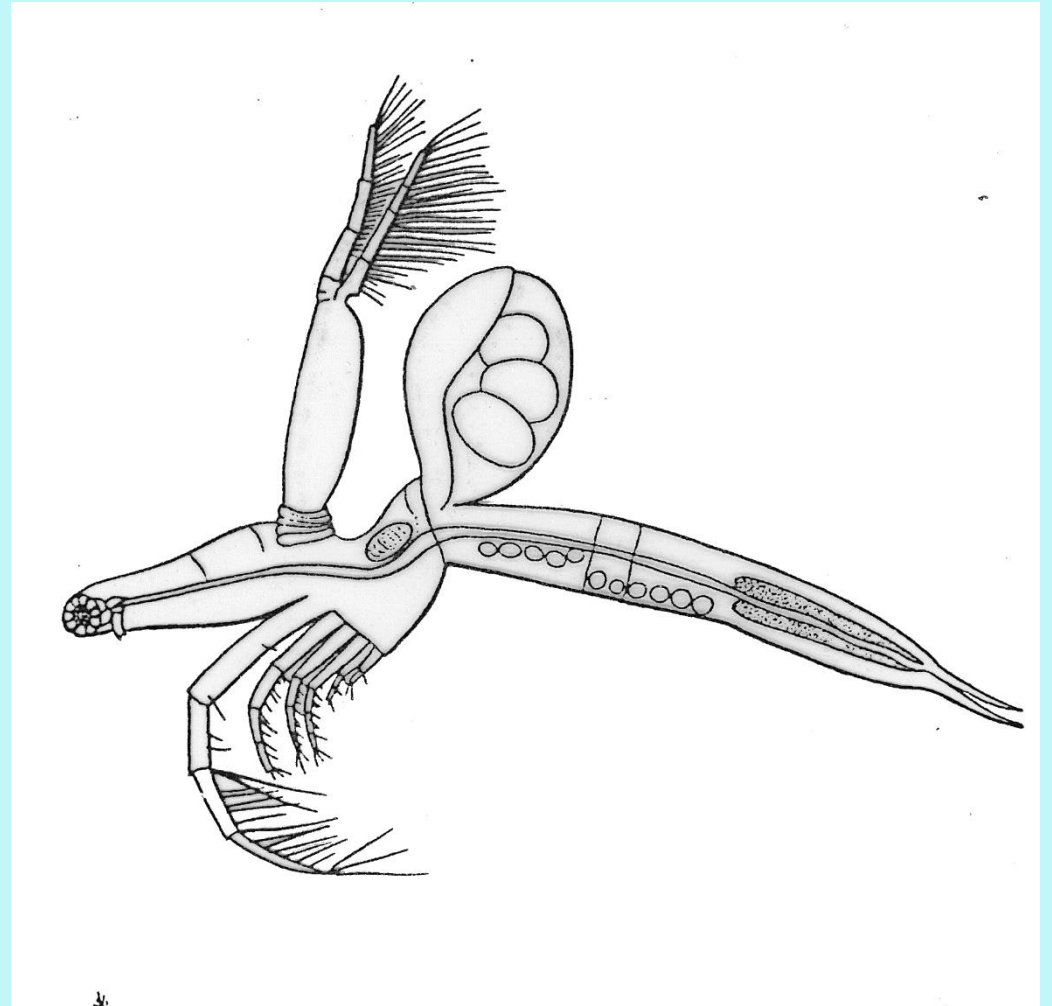
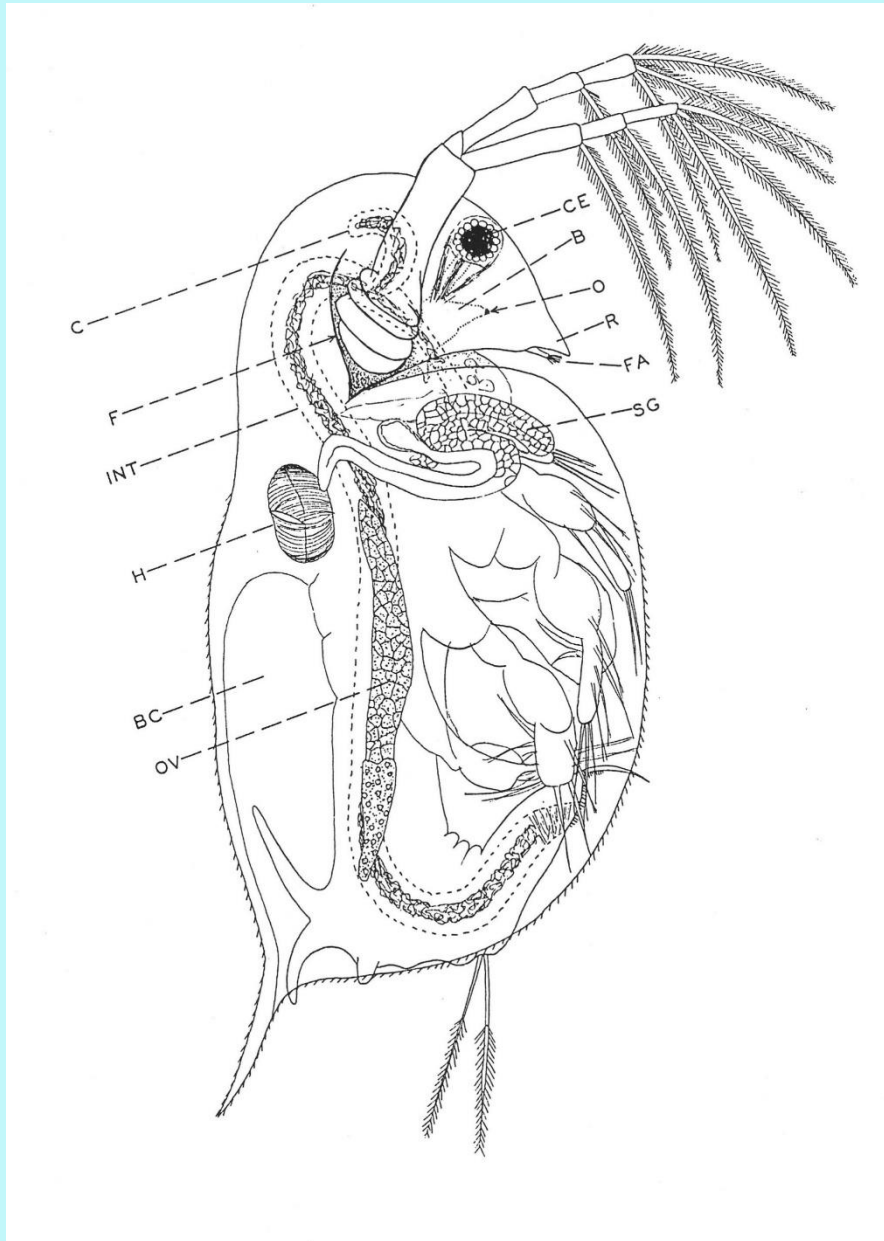


Figs 13–21. *Keratella edmondsoni* Ahlstrom. 13, 15: dorsal view, 17: ventral view, 18: lateral view, 21: posterior part of lorica, dorsal view. *Keratella procurva* (Thorpe). 14, 16: dorsal view, 19: ventral view, 20: posterior part of lorica, dorsal view (Yemenese specimens; see Segers & Dumont, 1993). (Scale bars: 13–14: 50 μ m, 15–21 (S.E.M. photographs): 10 μ m).

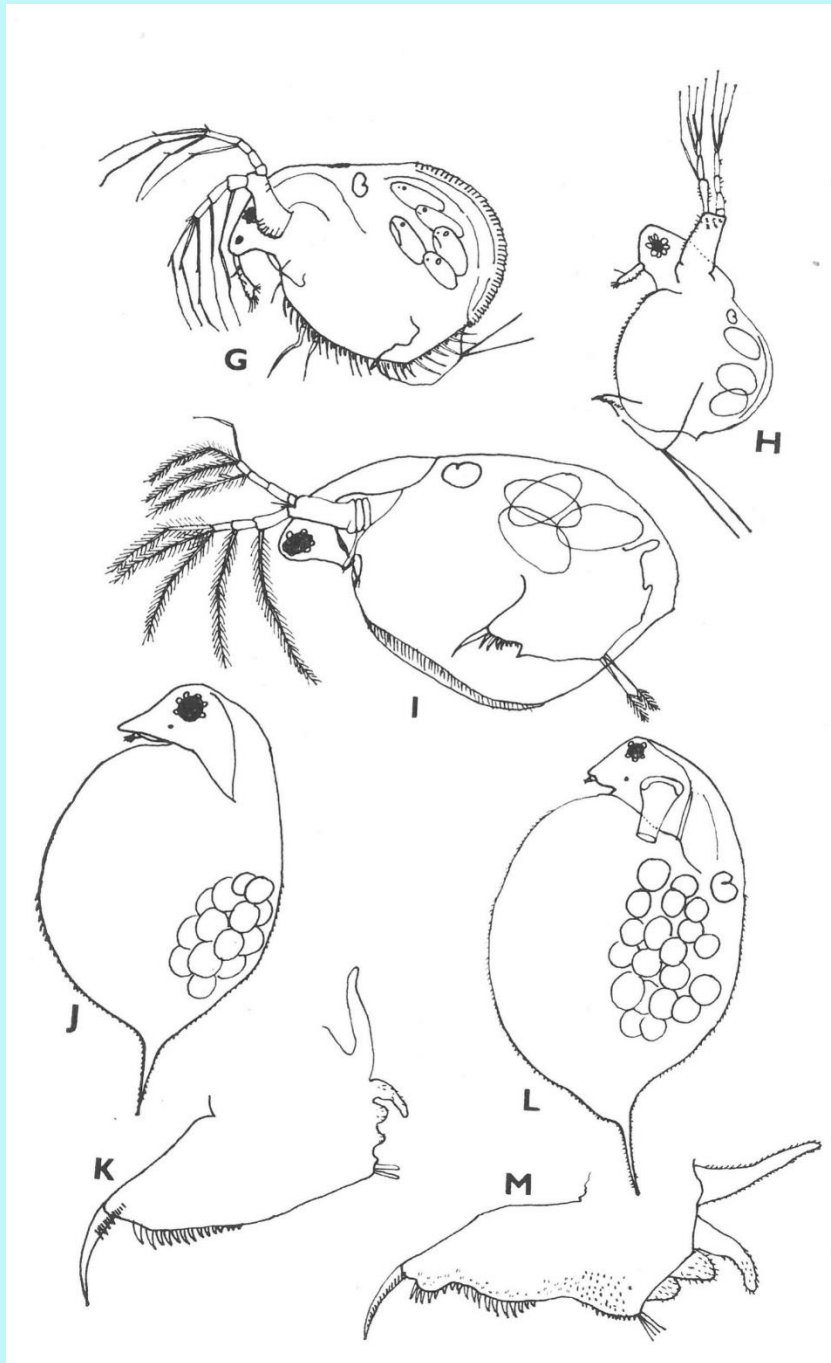
ROTIFERA - VÍŘNÍCI



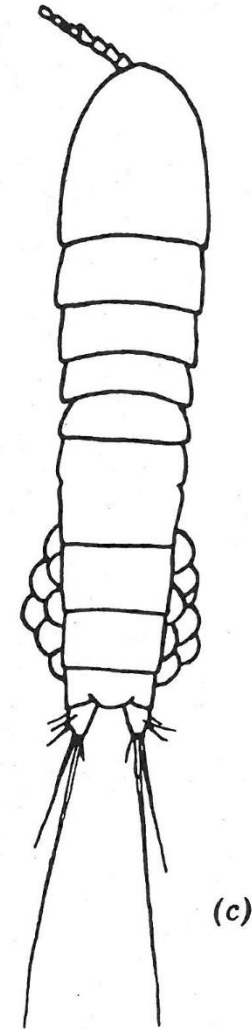
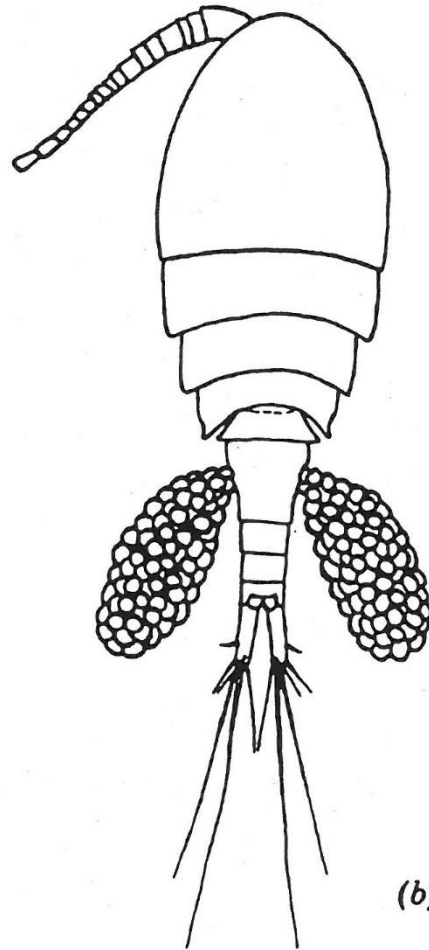
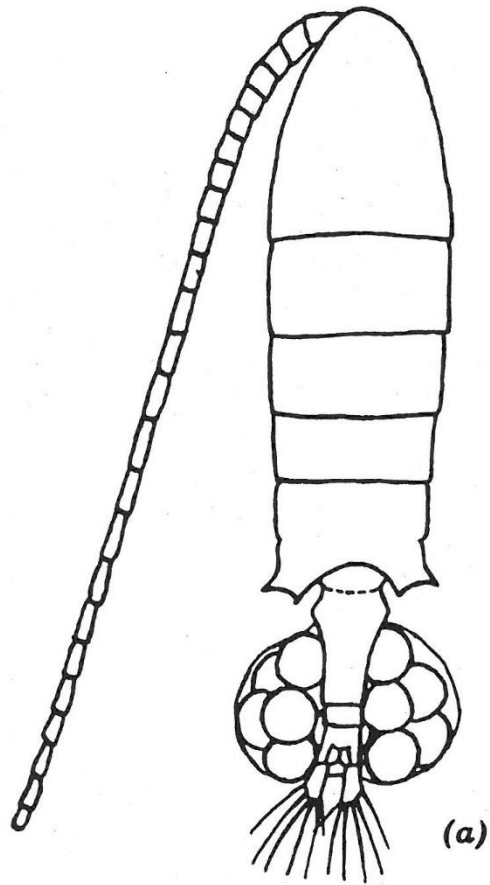
CLADOCERA - PERLOOČKY



CLADOCERA - PERLOOČKY

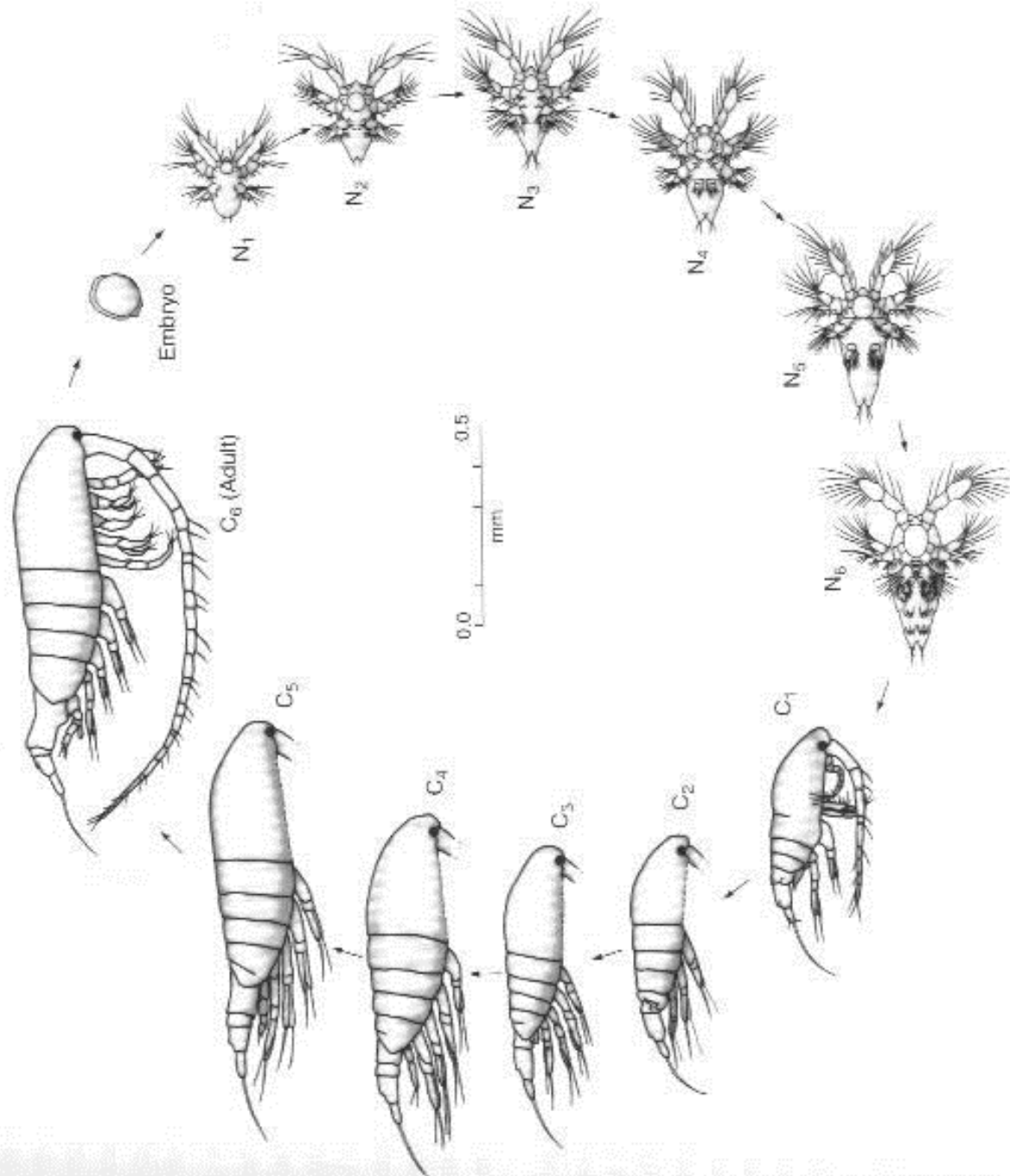


KLANONOŽCI - COPEPODA



KLANONOŽCI

COPEPODA



ZOOPLANKTON

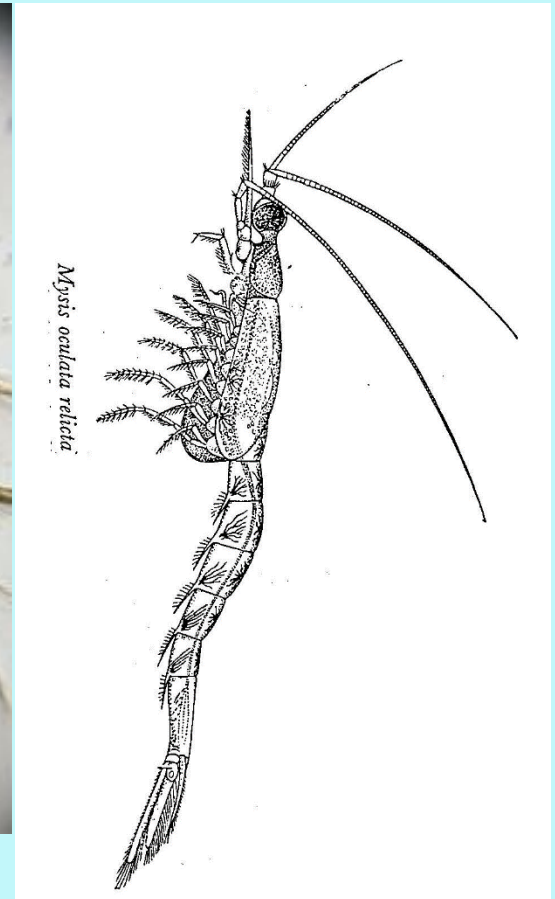
Další zástupci patří do skupin:

roztoči
Acari

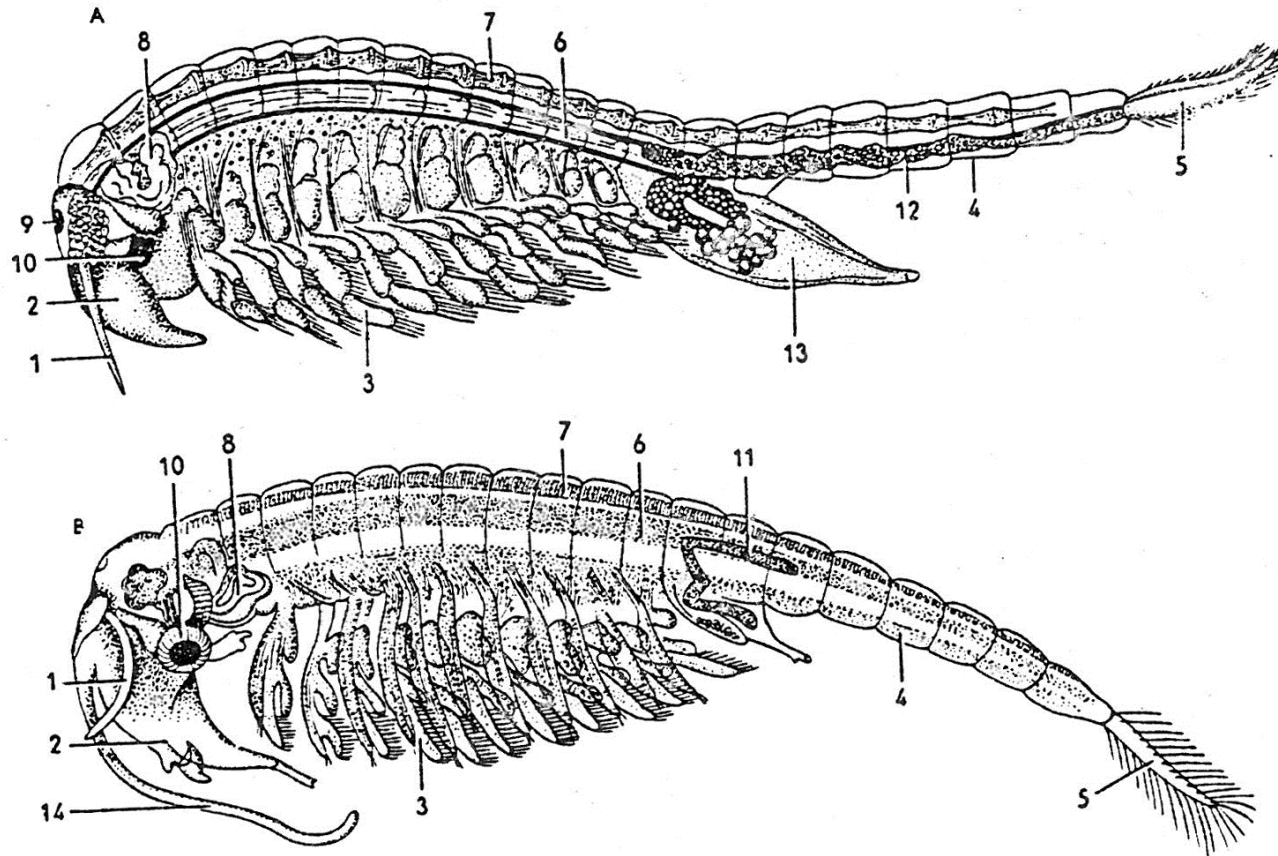
lasturnatky
Ostracoda

kapřivci
Branchiura

vidlonožci
Mysidacea



ŽÁBRONOŽKY - ANOSTRACA



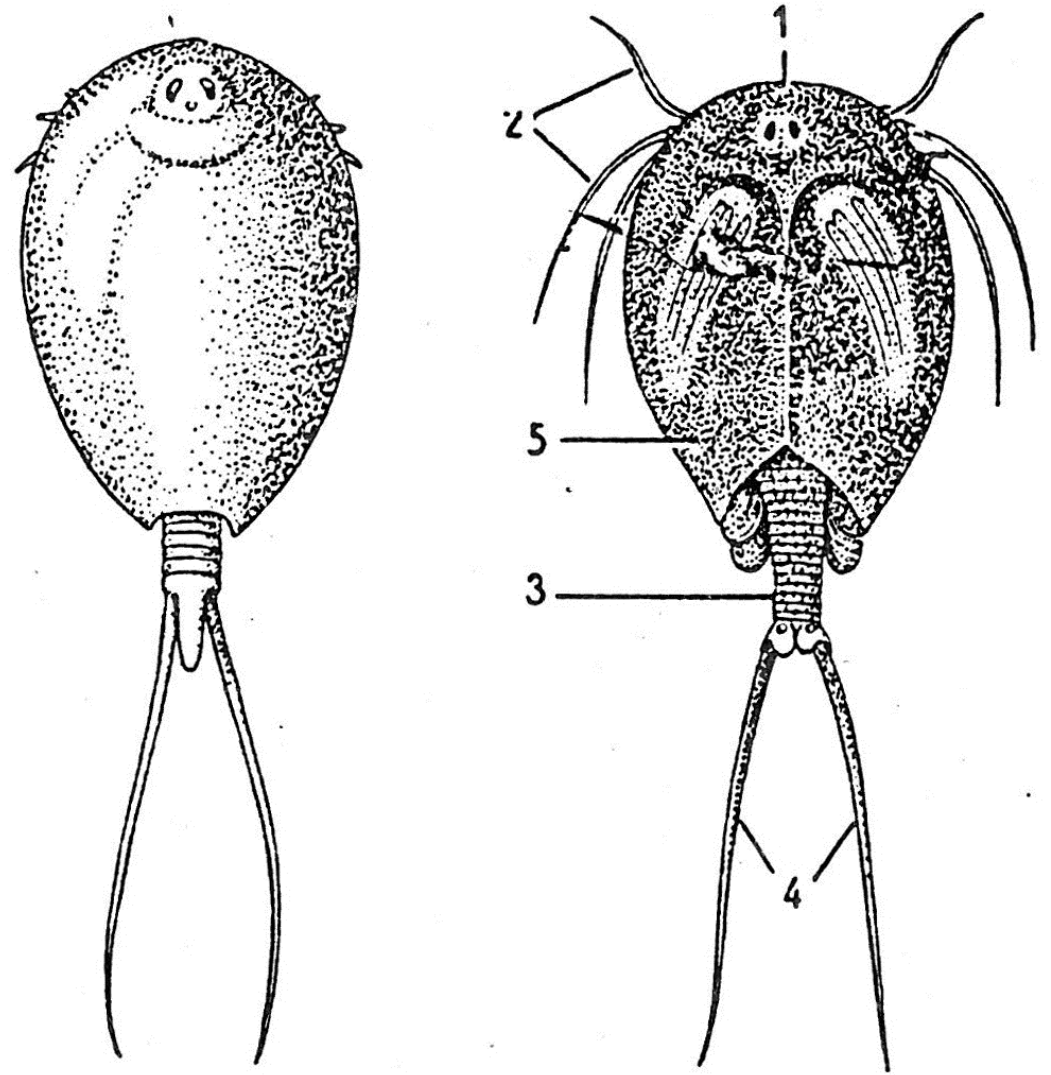
Žábřonožky (*Anostraca*), (podle Waglera).

A – žábřonožka sněžní (*Chirocephalopsis grubei*), samice, B – žábřonožka letní (*Branchipus stagnalis*), samec.

1 – antenula, 2 – anténa, 3 – hrudní nožky, 4 – záď neboli abdomen, 5 – vidlice neboli furka, 6 – střevo, 7 – srdce s postranními ostiemi, 8 – maxilární žláza, 9 – naupliové oko, 10 – složené oko, 11 – varle, 12 – vaječník, 13 – vaječný vak, 14 – hlavový výrůstek samce.

LISTONOZI

NOTOSTRACA

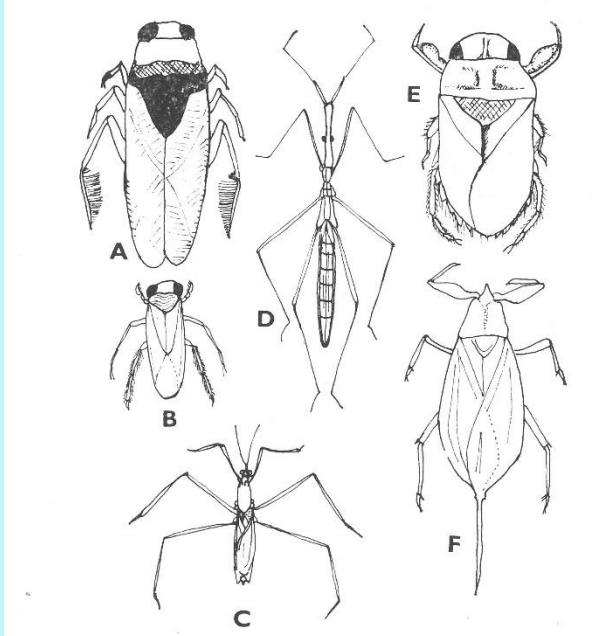
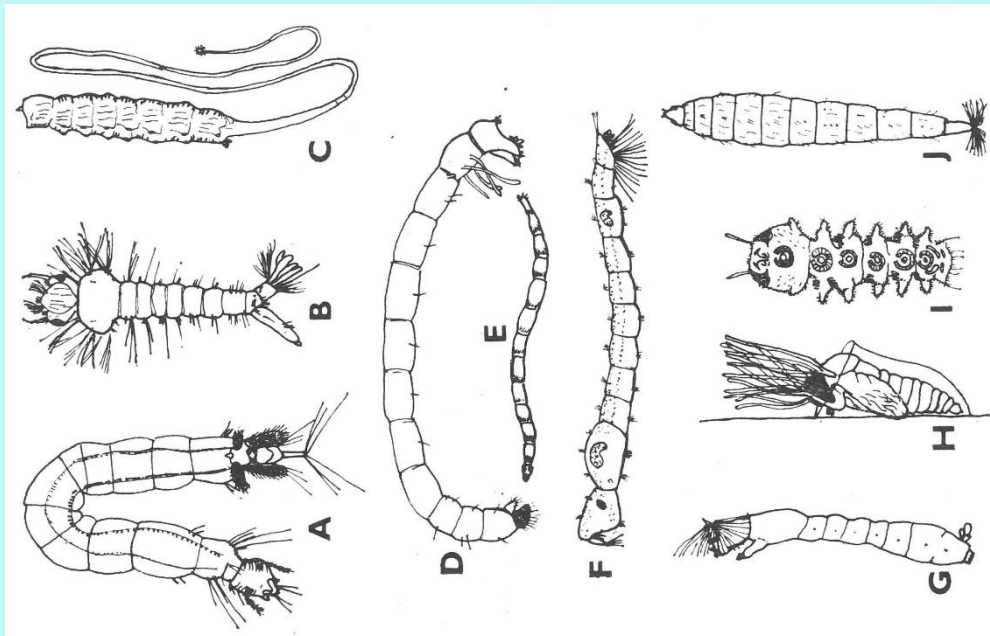
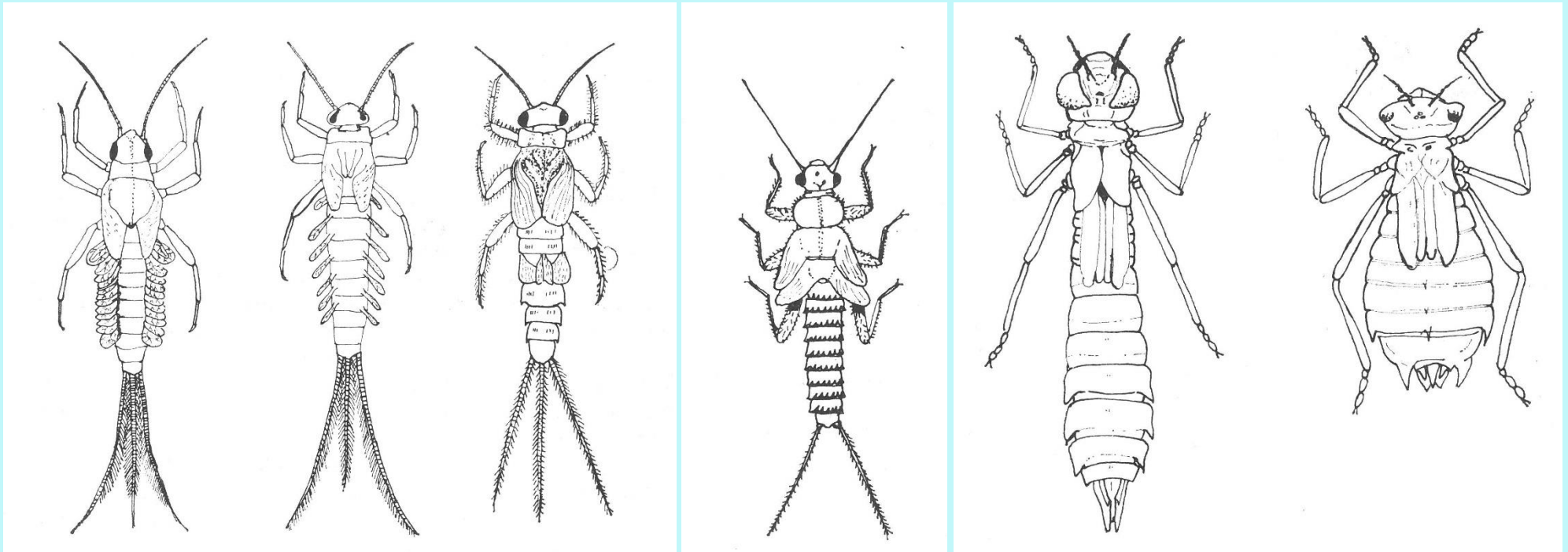


A — listonoh *Lepidurus macrurus*, B — listonoh letní (*Triops cancriformis*).

1 — oči, 2 — nitkovité výrůstky prvního páru hrudních nožek, 3 — zád, 4 — vidlička, 5 — hlavohrudní štít.

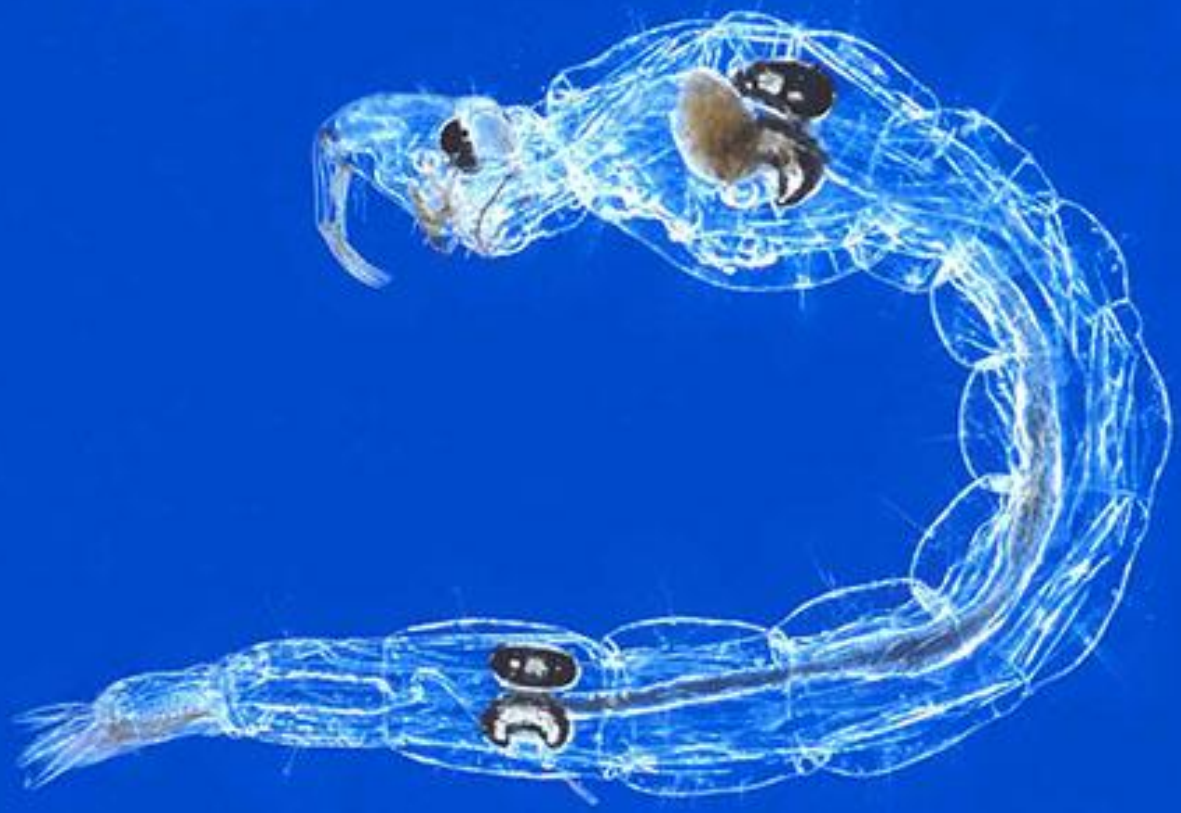


LARVY VODNÍHO HMYZU



LARVY KORETER

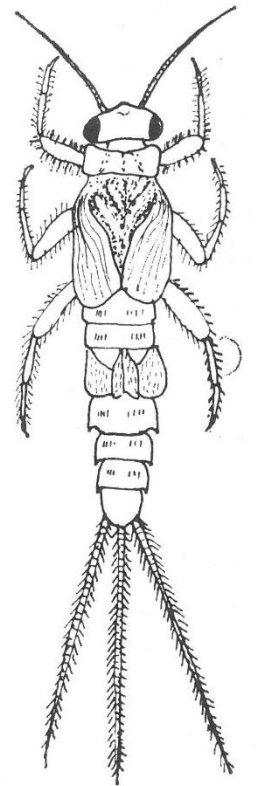
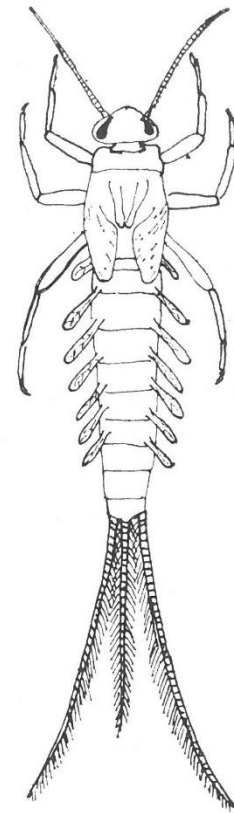
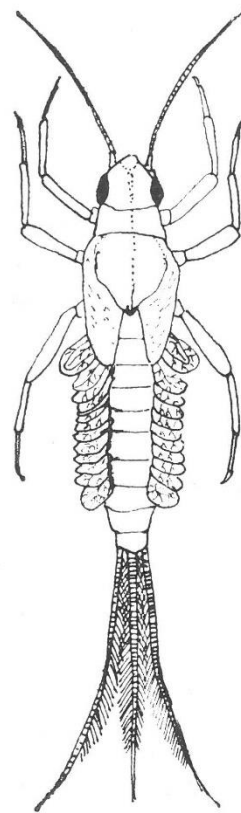
CHAOBORUS



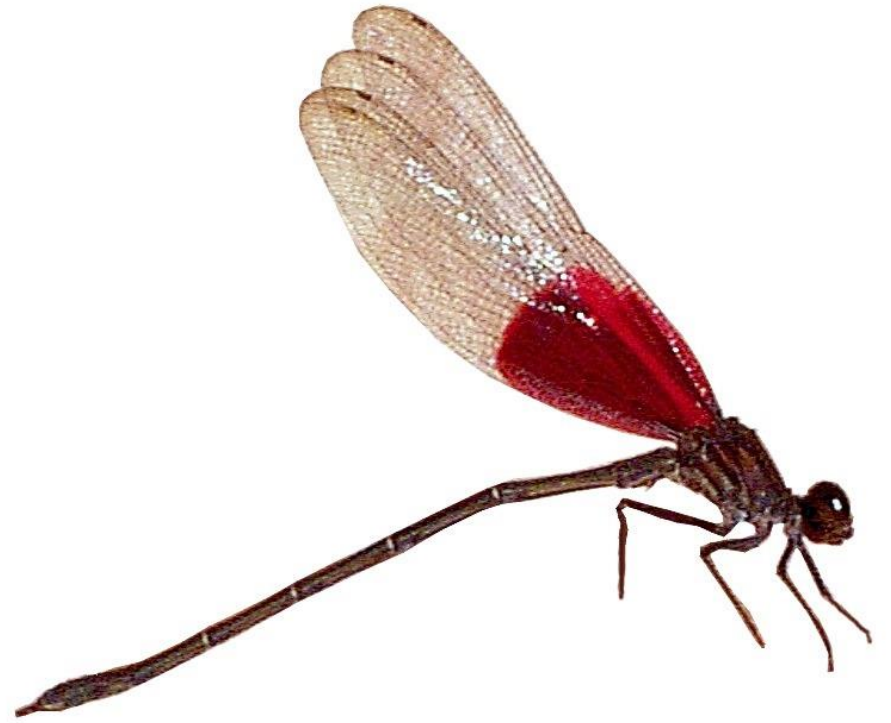
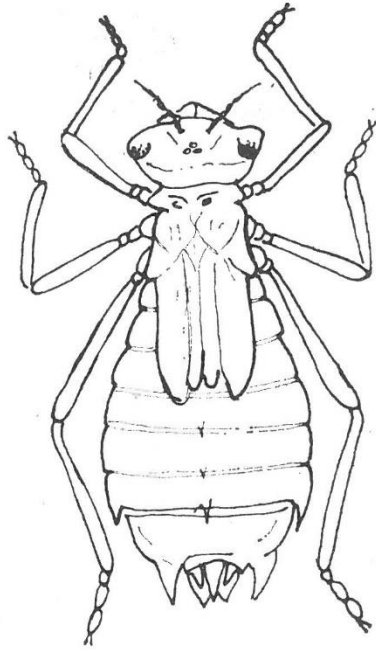
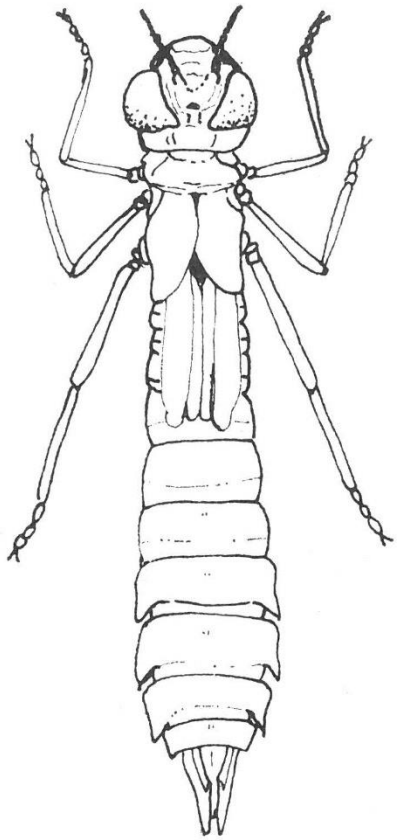


JEPICE

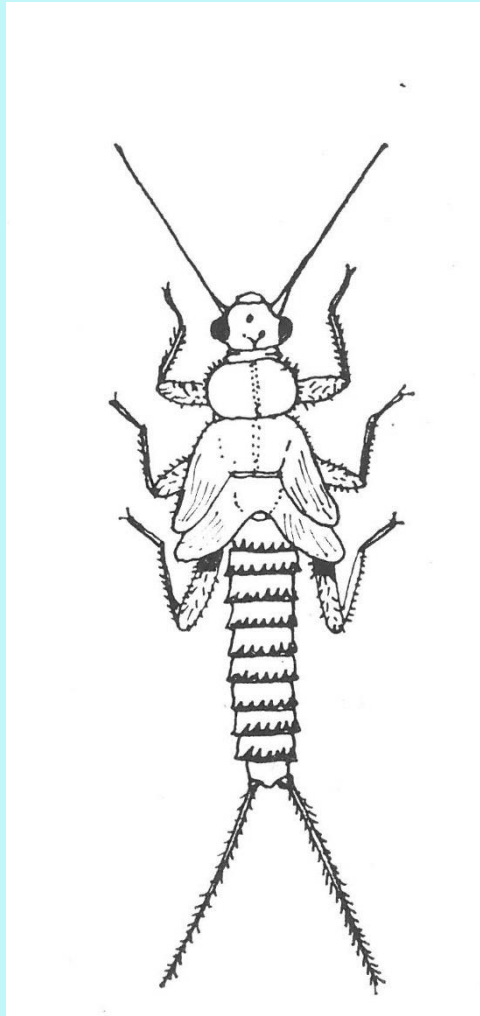
EPHEMEROPTERA



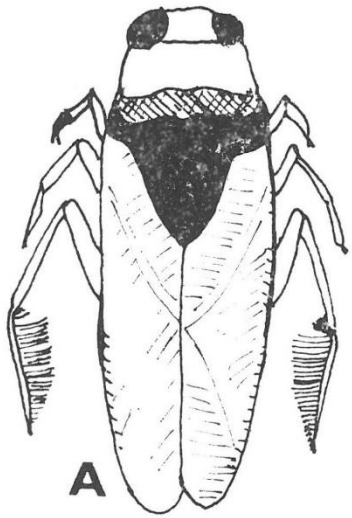
VÁŽKY - ODONATA



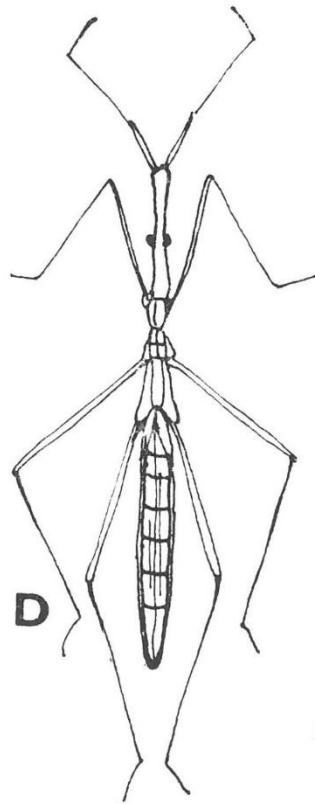
POŠVATKY - PLECOPTERA



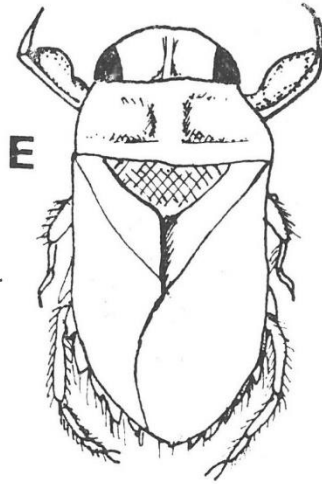
PLOŠTICE - HETEROPTERA



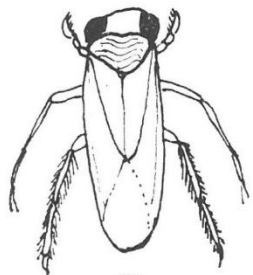
A



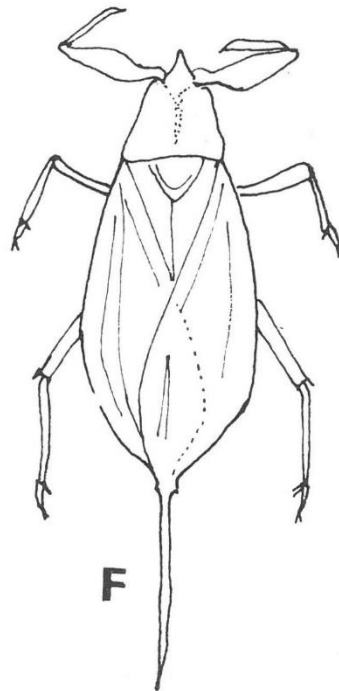
D



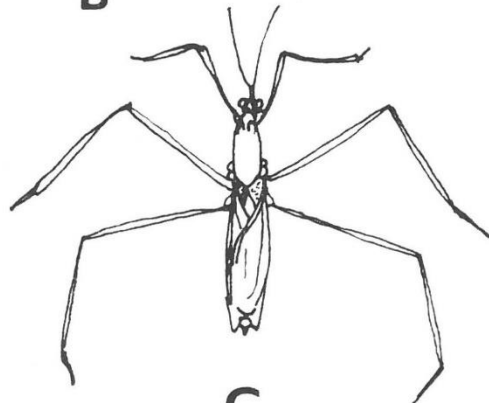
E



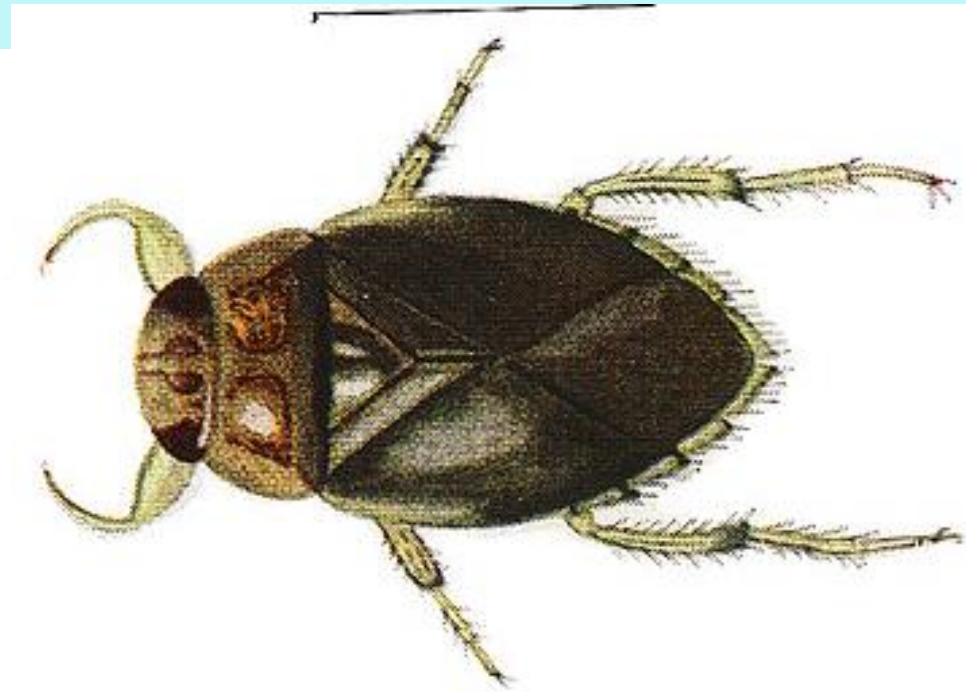
B



F



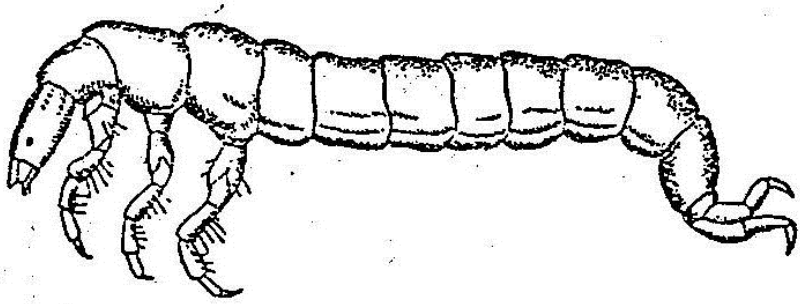
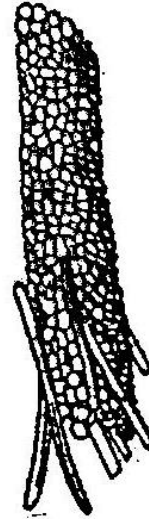
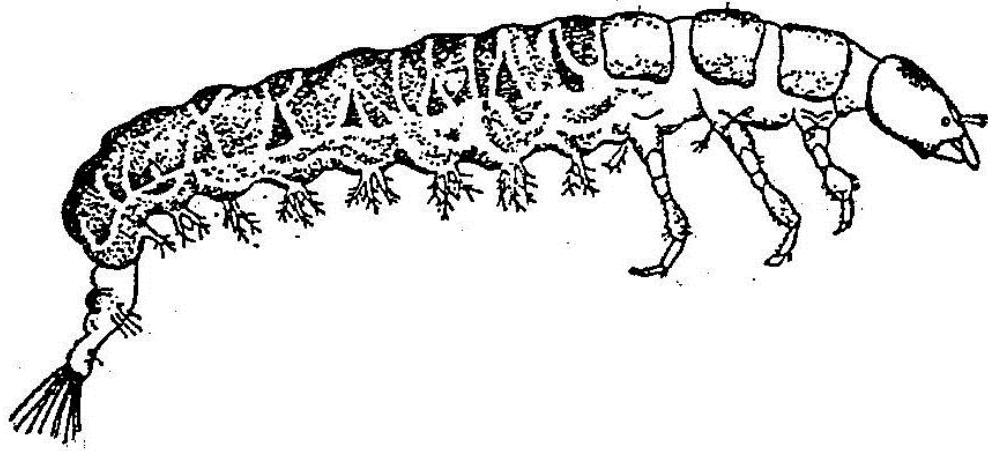
C



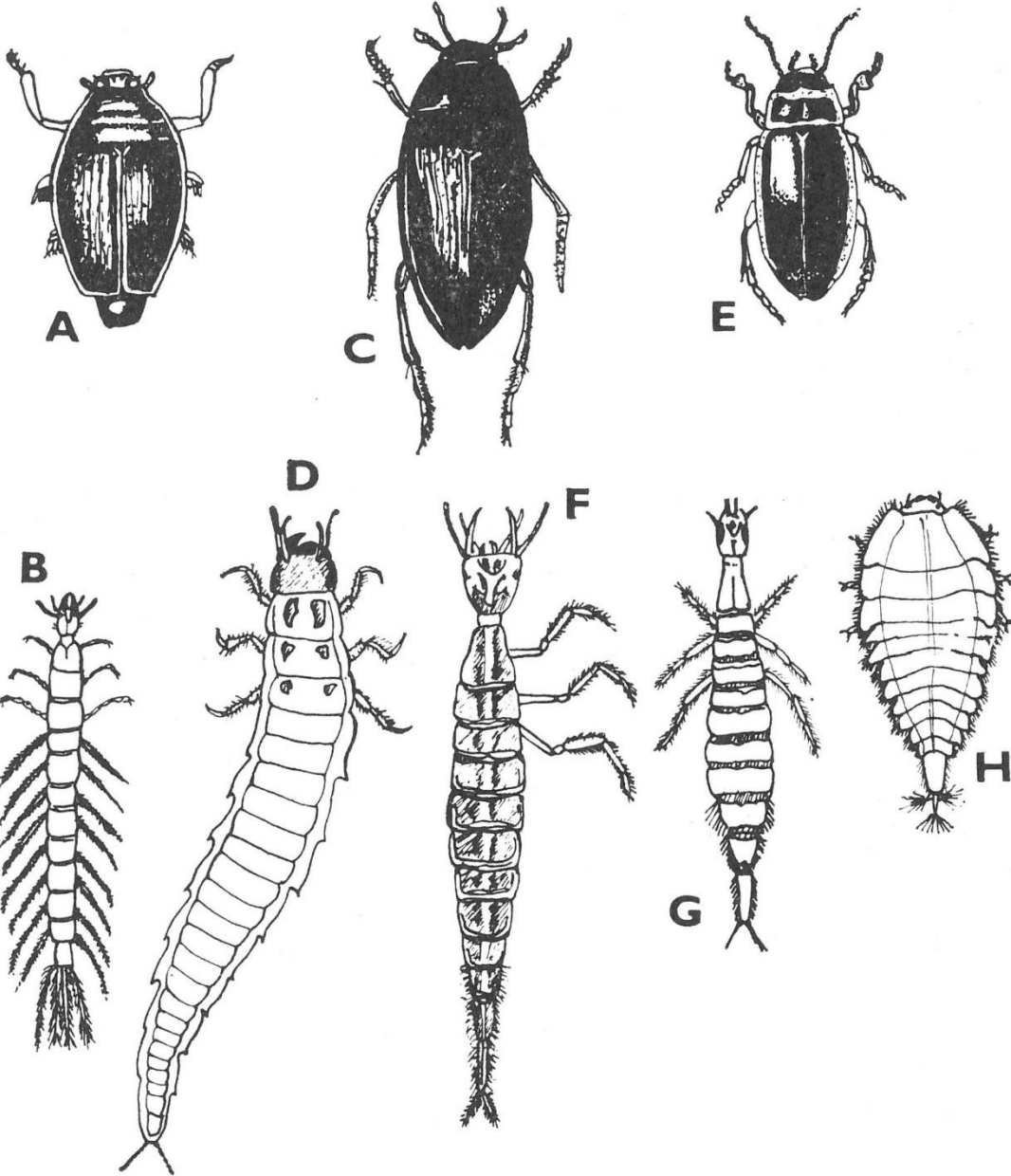
Corixa punctata
© Biopix.dk: N Sloth



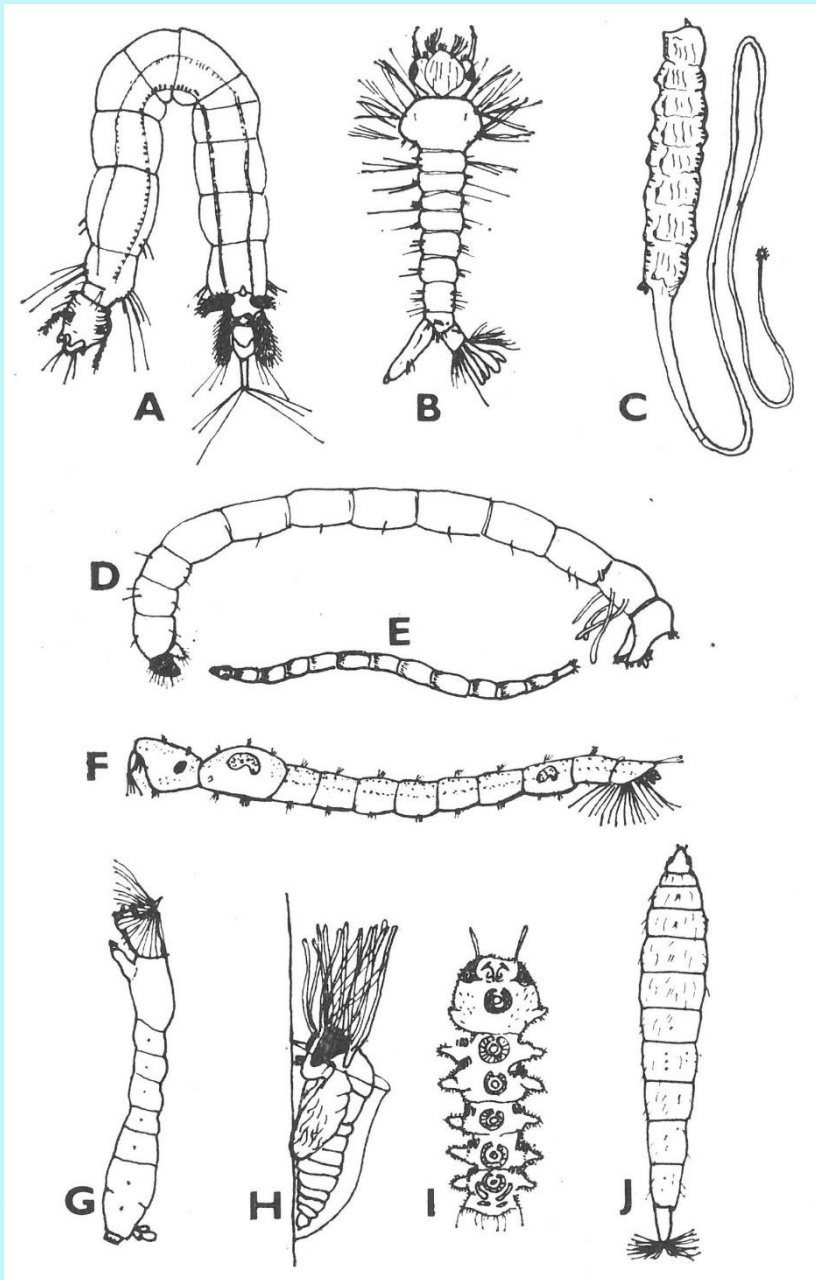
CHROSTÍCI - TRICHOPTERA



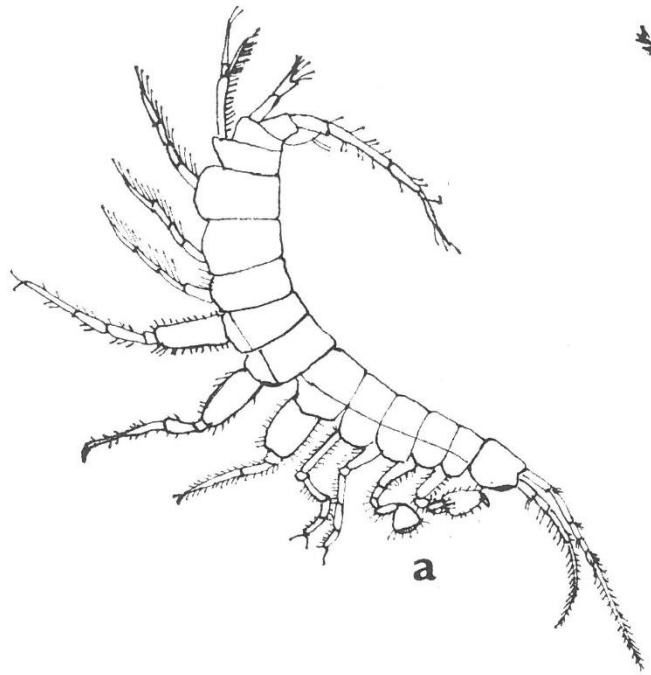
BROUCI - COLEOPTERA



DVOUKŘÍDLÍ - DIPTERA



BENTIČTÍ KORÝŠI

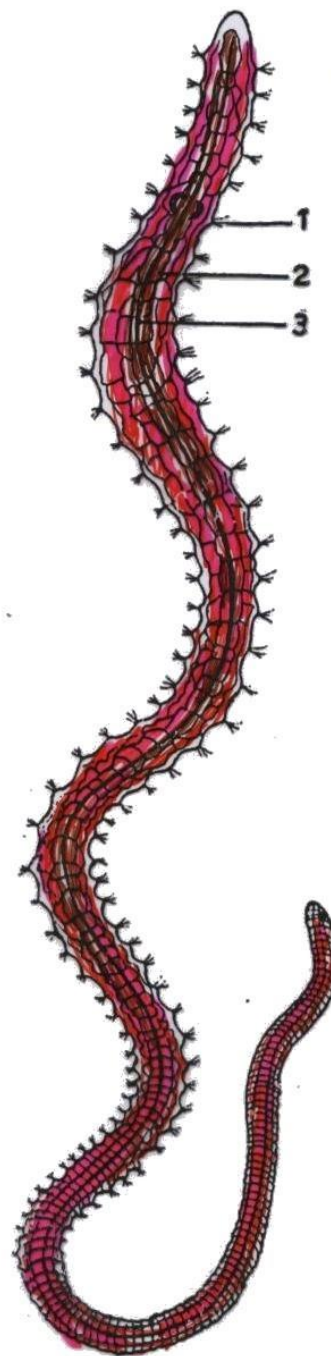


a



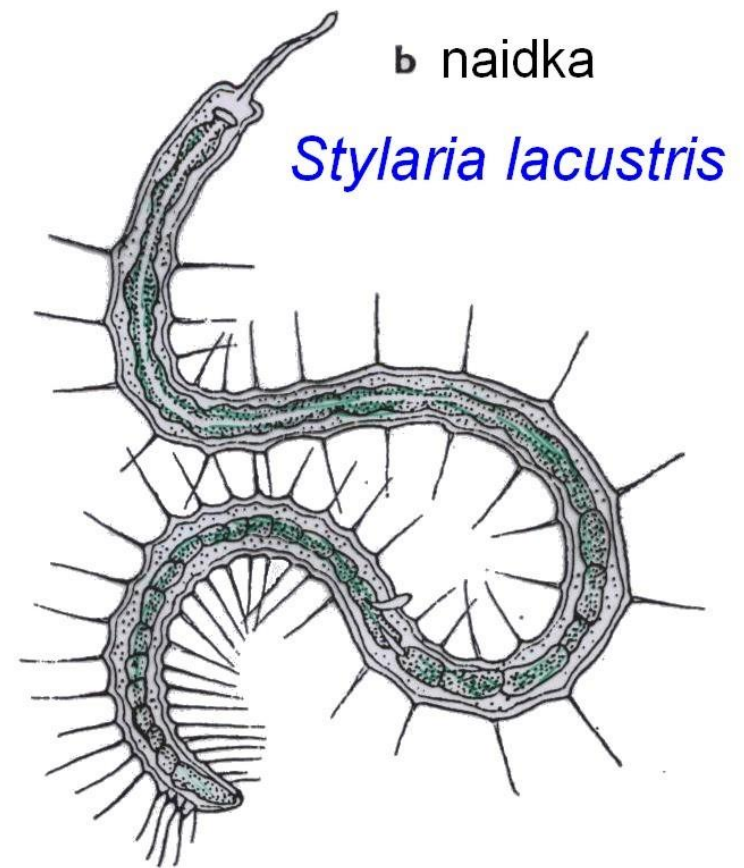
b

NITĚNKY



Tubifex tubifex

nitěnka obecná



Sladkovodní máloštětinatci

Oligochaeta